



HINO 300

Series



Expand Your Vision



HINO 300 Series

THE HINO 300

»» **LOOKING FOR A HARD WORKING ECONOMIC, THEN TAKE A LOOK AT THE HINO 300 RANGE.**

The Hino 300 is an ideal transport solution with an approximate body and payload allowance of between 4.5 to 8.5 ton. Rugged and reliable, there is no question that the Hino 300 will get your goods safely to their destination.

HINO 300 SERIES

- 511 LDT
- 611 LDT
- 711 LDT
- 813 LDT
- 913 LDT



Fuel Tank +

100L Capacity with fuel tank cap key



ENGINE +

Low emissions with a Euro 1 and Euro 2 rating with Engine Diesel mechanical provide uncompromised power and fuel economy



NUMBERS + OF TYRES

7-Tyres with Spare Tyre

CAB DESIGN

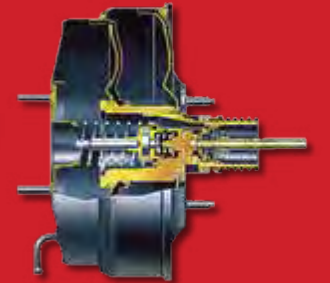
Aerodynamic: The windshield rake has been optimized to ensure both increased interior space and enhanced aerodynamics. Furthermore, the front corners have been given a more gradual curve for a lower Cd value (coefficient of drag), contributing to enhanced fuel economy.

+ Front & Rear Suspension

Semi-elliptic main and auxiliary leaf spring with double acting shock absorbers

DRUM BRAKES

Auto-adjusting drum brakes provide optimum braking capability, whilst ensuring low operating and maintenance costs.



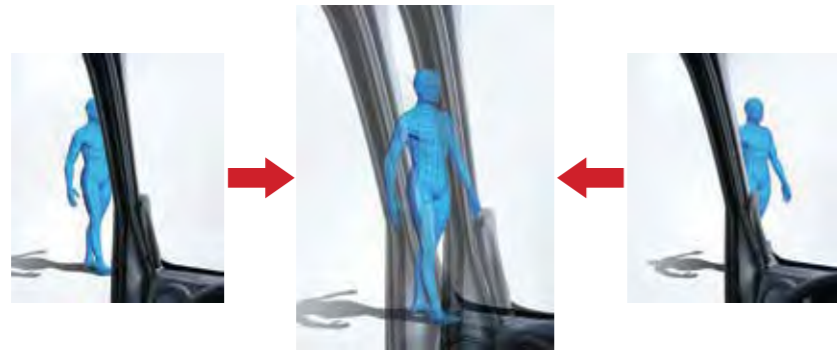
THE HINO 300

» THE HINO 300 HAS BEEN BUILT WITH THE DRIVER IN MIND. THE CAB IS SPACIOUS WITH PLENTY OF HEADSPACE, LEGROOM AND IN-CAB STORAGE

The dashboard has been ergonomically designed to be easy to use. Air conditioning keeps your driver and passenger cool and alert. Reduced vibrations from the steering wheel reduce driver stress. In addition to driver comfort, safety is also a key priority. The Hino 300 series has side impact beams, and an improved front suspension that keeps the cab more stable and comfortable for the driver.

OPTICAL EFFECT + (WIDE CAB)

The view from each of the driver's eyes overlap, making the pillar nearly invisible.



SAFETY FEATURES +

SAFETY IS CONSIDERED FROM EVERY ANGLE WITH A REINFORCED STEEL CAB, SEATBELT INDICATOR LIGHT AND WARNING BUZZER. THE HINO 300 IS ALSO EQUIPPED WITH THINNER FRONT PILLARS FOR AN UNINTERRUPTED VIEW.

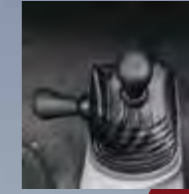
LED Meter Panel +



+AIR CONDITIONER +POWER WINDOWS AND DOORS (OPTIONAL)

Keeps the driver cool and alert improving both driver and vehicle safety.

+RETRACTABLE GEAR LEVER



A simple innovation that enhances the driver's freedom of movement in the cab.

+CAB SPACE



SPECIFICATIONS +

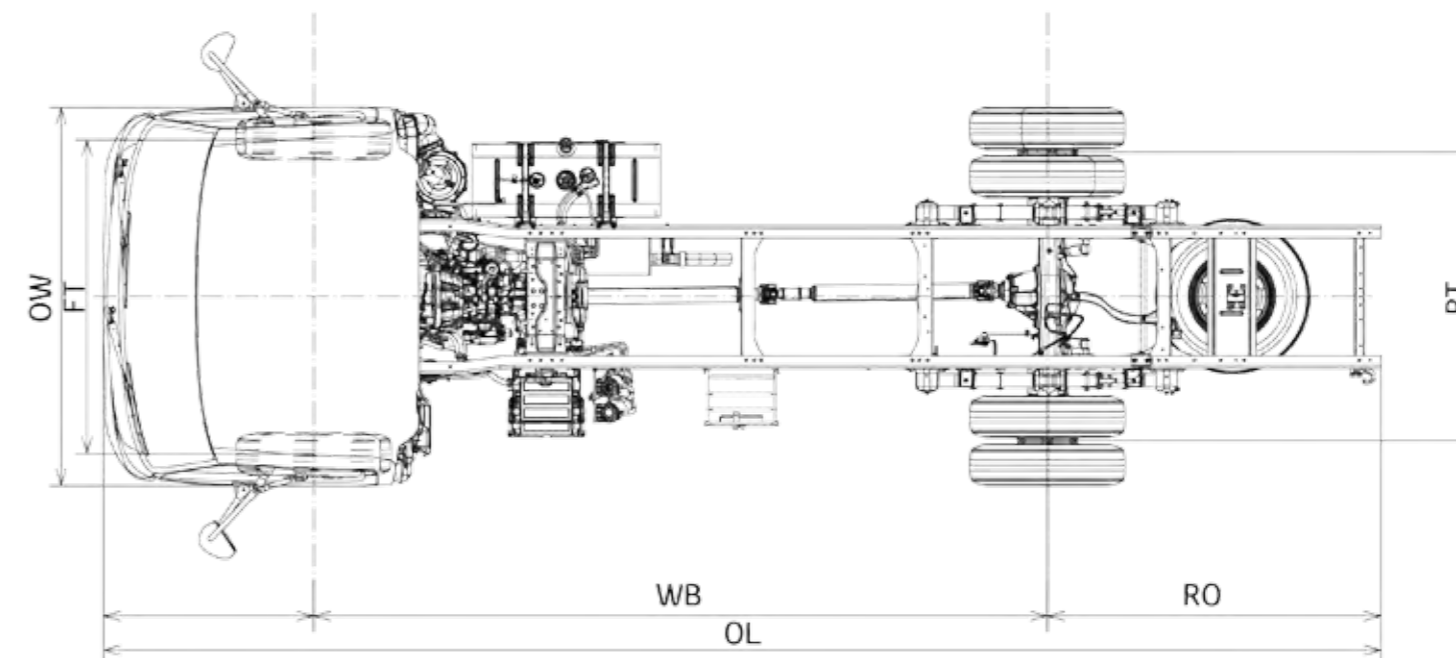
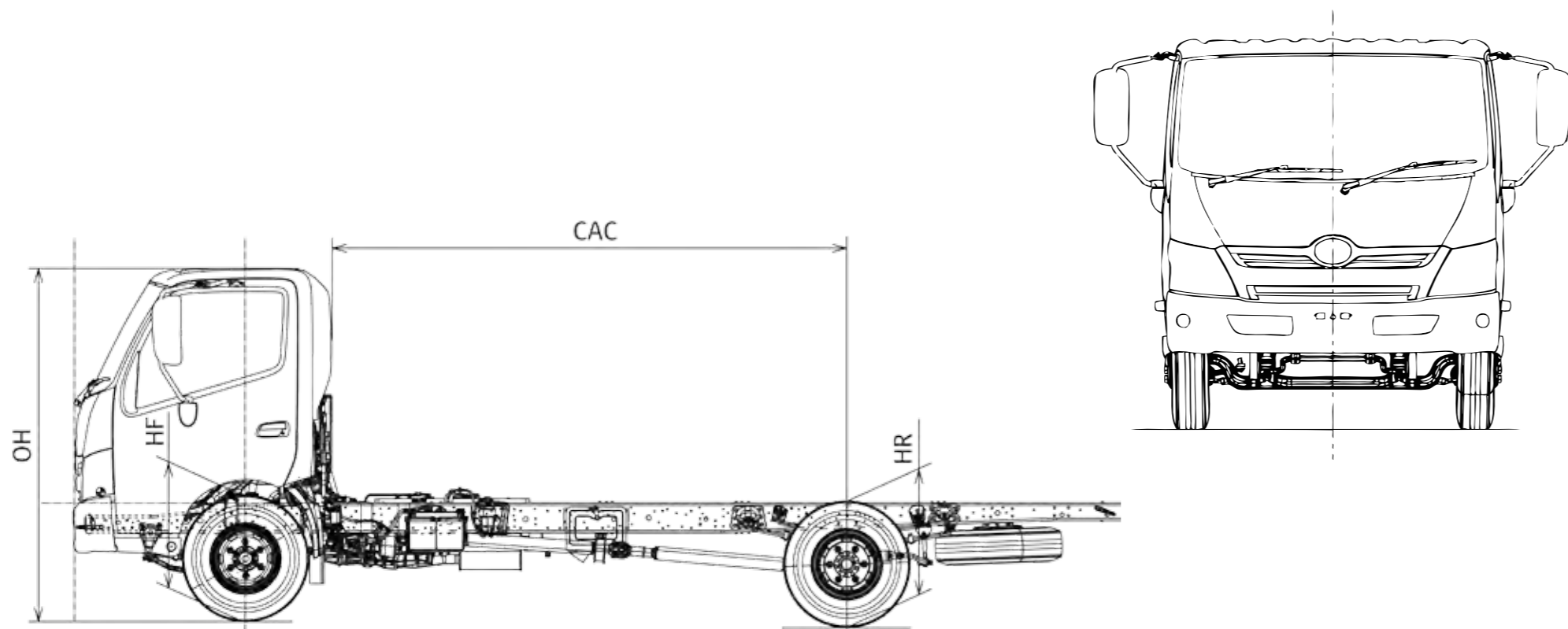
	Hino 511	Hino 611	Hino 711	Hino 711
Engine	Model	W04D-J	W04D-J	W04D-J
Combustion System	Direct Injection Type	Direct Injection Type	Direct Injection Type	Direct Injection Type
Fuel Injection System	Automatic timer and Mechanical Governor	Automatic timer and Mechanical Governor	Automatic timer and Mechanical Governor	Automatic timer and Mechanical Governor
Bore X Stroke	104 x 118 mm	104 x 118 mm	104 x 118 mm	104 x 118 mm
Capacity (cc)	4,009	4,009	4,009	4,009
Max. Speed (km/h)	118	113	113	109
Compression Ratio	18	18	18	18
Configuration	In-line	In-line	In-line	In-line
Engine Oil Cooler	Yes	Yes	Yes	Yes
Euro Emission Status	Euro 1	Euro 1	Euro 1	Euro 1
Max Eng. Speed rpm	3,400	3,400	3,400	3,400
Air Intake System	Natural Aspirated and Stack Type Air Intake	Natural Aspirated and Stack Type Air Intake	Natural Aspirated and Stack Type Air Intake	Natural Aspirated and Stack Type Air Intake
Number of Cylinders	4	4	4	4
Power (ISO NET) (kW@rpm)	73 @ 3,200	73 @ 3,200	73 @ 3,200	73 @ 3,200
Torque (Nm@rpm)	252 @ 2,000	252 @ 2,000	252 @ 2,000	252 @ 2,000
Valve Configuration	Overhead	Overhead	Overhead	Overhead
Mass Data	Tare - Front	1,300	1,325	1,365
	Tare - Rear	640	755	790
	Tare - Total (Incl. Spare Wheel)	1,940	2,080	2,155
	Chassis Payload Allowance	2,560	3,420	3,345
	GVM	4,500	5,500	5,500
Transmission	Type	5 Forward and 1 Reverse speeds	5 Forward and 1 Reverse speeds	5 Forward and 1 Reverse speeds
	Control	Mechanical	Mechanical	Mechanical
Front Axle	Type	Reversed Elliot 'I' Beam	Reversed Elliot 'I' Beam	Reversed Elliot 'I' Beam
Rear Axle	Type	Full Floating	Full Floating	Full Floating
Brake	Front	Drum	Drum	Drum
	Rear	Drum	Drum	Drum
Suspension	Front	Semi-elliptic Leaf Spring with Double shock absorbers	Semi-elliptic Leaf Spring with Double shock absorbers	Semi-elliptic Leaf Spring with Double shock absorbers
	Rear	Semi-elliptic Leaf Spring with Double shock absorbers	Semi-elliptic Leaf Spring with Double shock absorbers	Semi-elliptic Leaf Spring with Double shock absorbers
Steering	Type	Telescopic and tilt steering column	Telescopic and tilt steering column	Telescopic and tilt steering column
Fuel	Type	Diesel	Diesel	Diesel
	Tank Capacity (L)	100	80	100
Comfort & Convenience	Air Conditioner	Standard	Standard	Standard
	Radio CD/Player	Standard	Standard	Standard
Safety & Security	Seatbelt	Standard	Standard	Standard
	Side Impact Beams	Standard	Standard	Standard

	Hino 711	Hino 813	Hino 913
Engine	Model	W04D-J	W04D-TN
Combustion System	Direct Injection Type	Direct Injection Type	Direct Injection Type
Fuel Injection System	Automatic timer and Mechanical Governor	Automatic timer and Mechanical Governor	Automatic timer and Mechanical Governor
Bore X Stroke	104 x 118 mm	104 x 118 mm	104 x 118 mm
Capacity (cc)	4,009	4,009	4,009
Max. Speed (km/h)	109	113	109
Compression Ratio	18	18	19.2
Configuration	In-line	In-line	In-line
Engine Oil Cooler	Yes	Yes	Yes
Euro Emission Status	Euro 1	Euro 1	Euro 2
Max Eng. Speed rpm	3,400	3,400	3,300
Air Intake System	Natural Aspirated and Stack Type Air Intake	Natural Aspirated and Stack Type Air Intake	Natural Aspirated and Stack Type Air Intake
Number of Cylinders	4	4	4
Power (ISO NET) (kW@rpm)	73 @ 3,200	73 @ 3,200	86 @ 2,500
Torque (Nm@rpm)	252 @ 2,000	252 @ 2,000	353 @ 1,800
Valve Configuration	Overhead	Overhead	Overhead
Mass Data	Tare - Front	1,505	1,550
	Tare - Rear	790	880
	Tare - Total (Incl. Spare Wheel)	2,295	2,430
	Chassis Payload Allowance	4,205	4,260
	GVM	6,500	6,500
Transmission	Type	5 Forward and 1 Reverse speeds	5 Forward and 1 Reverse speeds
	Control	Mechanical	Mechanical
Front Axle	Type	Reversed Elliot 'I' Beam	Reversed Elliot 'I' Beam
Rear Axle	Type	Full Floating	Full Floating
Brake	Front	Drum	Drum
	Rear	Drum	Drum
Suspension	Front	Semi-elliptic Leaf Spring with Double shock absorbers	Semi-elliptic Leaf Spring with Double shock absorbers
	Rear	Semi-elliptic Leaf Spring with Double shock absorbers	Semi-elliptic Leaf Spring with Double shock absorbers
Steering	Type	Telescopic and tilt steering column	Telescopic and tilt steering column
Fuel	Type	Diesel	Diesel
	Tank Capacity (L)	100	100
Comfort & Convenience	Air Conditioner	Standard	Standard
	Radio CD/Player	Standard	Standard
Safety & Security	Seatbelt	Standard	Standard
	Side Impact Beams	Standard	Standard

SPECIFICATIONS +

	Hino 511	Hino 611	Hino 711
Wheel Base (WB)	2,525	2,525	3,400
Overall Length (OL)	4,675	4,850	5,200
Overall Width (OW)	1,695	1,860	1,995
Overall Height (OH)	2,135	2,140	2,225
Cab to Axle Center (CAC)	1,945	1,945	2,250
Rear Overhang (at frame end) (RO)	1,135	1,135	1,280
Front Chassis Height (HF)	660	665	715
Rear Chassis Height (HR)	720	720	790
Front Tread (FT)	1,400	1,400	1,660
Rear Tread (RT)	1,350	1,435	1,480
Turning Radius on Tire	5,400	5,400	4,800
Turning Radius Wall to Wall	6,000	6,000	5,500

	Hino 711	Hino 813	Hino 913
Wheel Base (WB)	3,430	3,870	4,200
Overall Length (OL)	6,120	6,740	7,285
Overall Width (OW)	1,995	1,995	2,055
Overall Height (OH)	2,210	2,240	2,255
Cab to Axle Center (CAC)	2,870	3,310	3,640
Rear Overhang (at frame end) (RO)	1,580	1,760	1,940
Front Chassis Height (HF)	700	735	745
Rear Chassis Height (HR)	790	815	820
Front Tread (FT)	1,660	1,655	1,655
Rear Tread (RT)	1,480	1,520	1,590
Turning Radius on Tire	5,800	6,900	7,400
Turning Radius Wall to Wall	6,500	7,600	8,100



Products +



Chassis +



Dump +



Garbage +



Refrigerator +



Tanker +



Crane +



Open Cargo +



Cage +

SUPPORT FROM HINO +

While Hino is renowned for its exceptional quality, durability and reliability, peace of mind is also part of Hino's customer-focused and service heritage. HinoCare provides comprehensive support and service from warranties to spare parts replacement to roadside assistance.

Hino Authorized Service centers provide service for Hino trucks by expanding to be in every city to reach each Hino Trucks in Iraq

Genuine Parts to maximize your Hino working hours and minimize the breakdown hours

SERVICE INTERVALS +

Every 5,000Km and depend on application and operation conditions

MOBILE WORKSHOP +

At site assistance by highly qualified technically-trained staff for breakdown assistance

HINO WARRANTY +

Hino trucks that purchased from authorized Hino dealers are 3 years or 100,000 km whichever comes first

Parts Warranty for Hino genuine parts, purchased and installed at Hino Authorized Service Centers comes with 6 months or 10,000km whichever comes first for the day of installation

Eco Drive Support +

Training held by instructors that has a certificate by Hino Motors Limited, to train the drivers how to Drive economically and safely





Toyota Iraq

Toyota Showroom 1st floor, Al-Mansor, Baghdad, Iraq
Phone +964 780 790 2444
Mosul Rd, Next to 120 Rd Erbil, Iraq
Phone +964 750 790 2444
www.hino.iq